

TEST REPORT

Report No. : PN:HL:5490007781

DATE : 28/11/2014

SUPREME PETROCHEM LTD.

SOLITAIRE CORPORATE PARK, BLDG. NO. 11, 5TH FLOOR,, 167, GURU HARGOVINDJI,
MARG, CHAKALA
ANDHERI EAST MUMBAI-400093
INDIA

CONTACT PERSON : Mr. V.A. MULAY

THE FOLLOWING SAMPLE(S) WAS/WERE SUBMITTED AND IDENTIFIED BY/ON BEHALF OF THE CUSTOMER AS :

SAMPLE DESCRIPTION	HIPS (HIGH IMPACT POLYSTYRENE)
COLOUR	NATURAL
STYLE NO.	SH731E, SH731H2YG, SH731M, SH03, SH2157, SH 400M, SH 400HV, SH 2114, SH 2114HF
COMPOSITION	HIGH IMPACT POLYSTYRENE
SAMPLE RECD ON	26/11/2014 TESTING PERIOD : 26/11/2014 to 28/11/2014
TEST(S) REQUESTED	RoHS TEST (6E)
TEST METHOD	:IEC 62321 : 2008 / 2013

CONCLUSION : Based on the performed tests on selected part of submitted samples, the results of Lead, Mercury, Cadmium, Hexavalent chromium, Polybrominated biphenyls (PBB), Polybrominated diphenyl ethers (PBDE) **comply** with the limits as set by RoHS Directive 2011/65/EU Annex II; recasting 2002/95/EC.

Test result:

RoHS Directive 2011/65/EU Annex II

Test Item(s):	Unit	Test Method	Results 1	MDL	Limit
Cadmium(Cd)	mg/kg	With reference to IEC 62321-5:2013 (Determination of Cd by ICP-OES)	n.d.	5	100
Lead (Pb)	mg/kg	With reference to IEC 62321-5:2013 (Determination of Pb by ICP-OES)	n.d.	5	1000
Mercury (Hg)	mg/kg	With reference to IEC 62321-4:2013 (Determination of Hg by ICP-OES)	n.d.	5	1000
Hexavalent Chromium (CrVI)	mg/kg	With reference to IEC 62321:2008 (Determination of Cr-VI by UV-Spectrophotometer)	n.d.	2	1000
Sum of PBBs	mg/kg	With reference to IEC 62321:2008 (Determination of PBB by GC-MS)	n.d.	n.d.	1000
Monobromobiphenyl	mg/kg	With reference to IEC 62321:2008 (Determination of PBB by GC-MS)	n.d.	50	-
Dibromobiphenyl	mg/kg	With reference to IEC 62321:2008 (Determination of PBB by GC-MS)	n.d.	50	-
Tribromobiphenyl	mg/kg	With reference to IEC 62321:2008 (Determination of PBB by GC-MS)	n.d.	50	-
Tetrabromobiphenyl	mg/kg	With reference to IEC 62321:2008	n.d.	50	-

This is a computer generated report does not require signature

This document is issued by the Company subject to its General Conditions of Service printed overleaf, available on request or accessible at www.sgs.com/terms_and_conditions.htm and, for electronic format documents, subject to Terms and Conditions for Electronic Documents at www.sgs.com/terms_e-document.htm. Attention is drawn to the limitation of liability, indemnification and jurisdiction issues defined therein. Any holder of this document is advised that information contained hereon reflects the Company's findings at the time of its intervention only and within the limits of Client's instructions, if any. The Company's sole responsibility is to its Client and this document does not exonerate parties to a transaction from exercising all their rights and obligations under the transaction documents. This document cannot be reproduced except in full, without prior written approval of the Company. Any unauthorized alteration, forgery or falsification of the content or appearance of this document is unlawful and offenders may be prosecuted to the fullest extent of the law.

" Unless otherwise stated the results shown in this test report refer only to the sample(s) tested and such sample(s) are retained for 15 days only.

TEST REPORT

Report No. : PN:HL:5490007781

DATE : 28/11/2014

Test Item(s):	Unit	Test Method	Results 1	MDL	Limit
		(Determination of PBB by GC-MS)			
Hexabromobiphenyl	mg/kg	With reference to IEC 62321:2008 (Determination of PBB by GC-MS)	n.d.	50	-
Pentabromobiphenyl	mg/kg	With reference to IEC 62321:2008 (Determination of PBB by GC-MS)	n.d.	50	-
Heptabromobiphenyl	mg/kg	With reference to IEC 62321:2008 (Determination of PBB by GC-MS)	n.d.	50	-
Octabromobiphenyl	mg/kg	With reference to IEC 62321:2008 (Determination of PBB by GC-MS)	n.d.	50	-
Nonabromobiphenyl	mg/kg	With reference to IEC 62321:2008 (Determination of PBB by GC-MS)	n.d.	50	-
Decabromobiphenyl	mg/kg	With reference to IEC 62321:2008 (Determination of PBB by GC-MS)	n.d.	50	-
Sum of PBDEs	mg/kg	With reference to IEC 62321:2008 (Determination of PBDE by GC-MS)	n.d.	-	1000
Monobromodiphenyl ether	mg/kg	With reference to IEC 62321:2008 (Determination of PBDE by GC-MS)	n.d.	50	-
Dibromodiphenyl ether	mg/kg	With reference to IEC 62321:2008 (Determination of PBDE by GC-MS)	n.d.	50	-
Tribromodiphenyl ether	mg/kg	With reference to IEC 62321:2008 (Determination of PBDE by GC-MS)	n.d.	50	-
Tetrabromodiphenyl ether	mg/kg	With reference to IEC 62321:2008 (Determination of PBDE by GC-MS)	n.d.	50	-
Pentabromodiphenyl ether	mg/kg	With reference to IEC 62321:2008 (Determination of PBDE by GC-MS)	n.d.	50	-
Hexabromodiphenyl ether	mg/kg	With reference to IEC 62321:2008 (Determination of PBDE by GC-MS)	n.d.	50	-
Heptabromodiphenyl ether	mg/kg	With reference to IEC 62321:2008 (Determination of PBDE by GC-MS)	n.d.	50	-
Octabromodiphenyl ether	mg/kg	With reference to IEC 62321:2008 (Determination of PBDE by GC-MS)	n.d.	50	-
Nonabromodiphenyl ether	mg/kg	With reference to IEC 62321:2008 (Determination of PBDE by GC-MS)	n.d.	50	-
Decabromodiphenyl ether	mg/kg	With reference to IEC 62321:2008 (Determination of PBDE by GC-MS)	n.d.	50	-

Note :

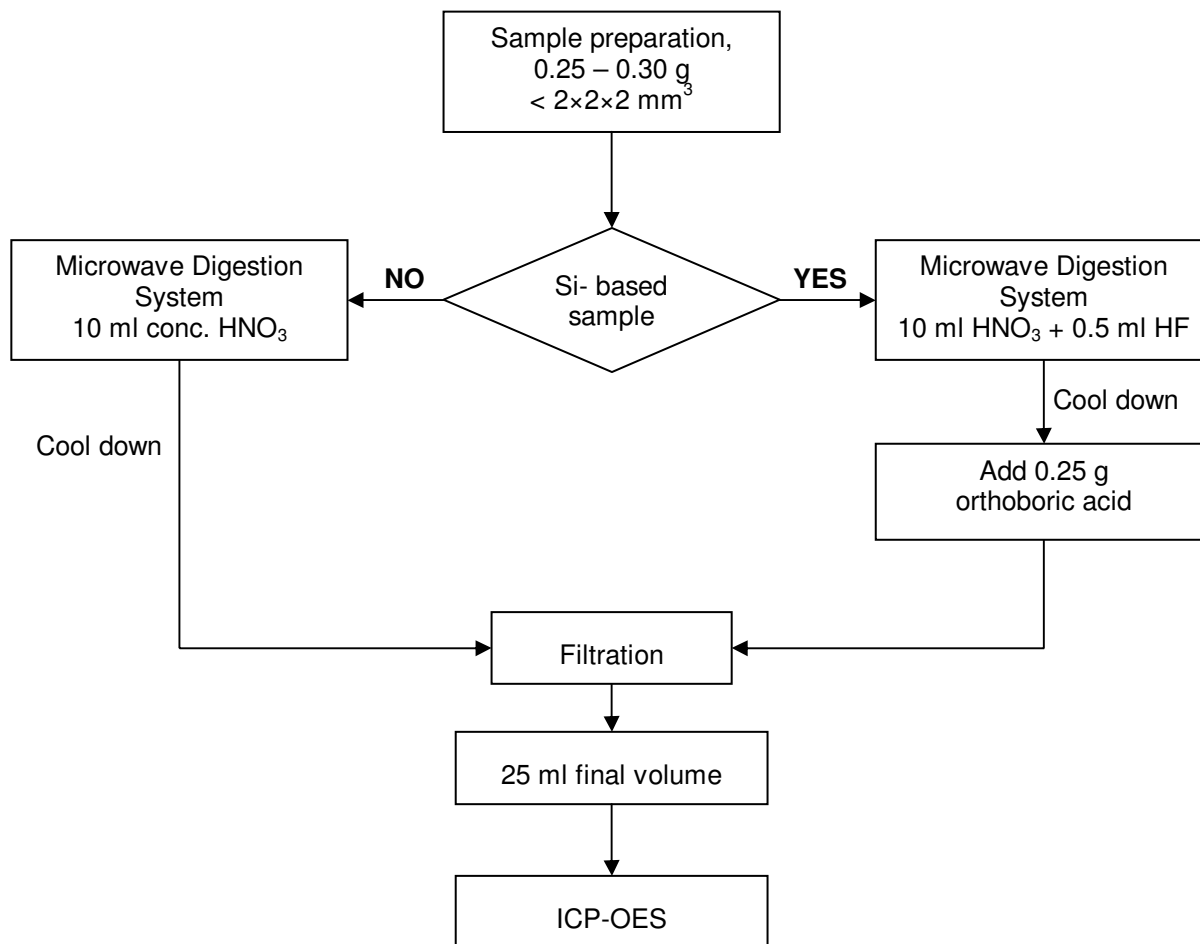
- (a) mg/kg = ppm ; 0.1wt% = 1000ppm
- (b) n.d. = not detected
- (c) MDL = Method Detection Limit
- (d) - = not regulated

This is a computer generated report does not require signature

This document is issued by the Company subject to its General Conditions of Service printed overleaf, available on request or accessible at www.sgs.com/terms_and_conditions.htm and, for electronic format documents, subject to Terms and Conditions for Electronic Documents at www.sgs.com/terms_e-document.htm. Attention is drawn to the limitation of liability, indemnification and jurisdiction issues defined therein. Any holder of this document is advised that information contained hereon reflects the Company's findings at the time of its intervention only and within the limits of Client's instructions, if any. The Company's sole responsibility is to its Client and this document does not exonerate parties to a transaction from exercising all their rights and obligations under the transaction documents. This document cannot be reproduced except in full, without prior written approval of the Company. Any unauthorized alteration, forgery or falsification of the content or appearance of this document is unlawful and offenders may be prosecuted to the fullest extent of the law.

" Unless otherwise stated the results shown in this test report refer only to the sample(s) tested and such sample(s) are retained for 15 days only.

Process Flow for analysis of metal contents in plastics, metals and electronic components sample



Analyzed By: Vijaykumar Phapale

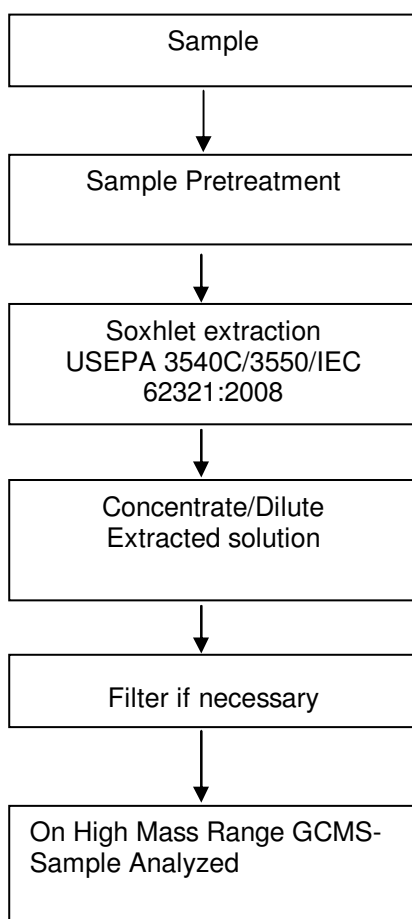
Checked By: Amit Kulkarni

This is a computer generated report does not require signature

This document is issued by the Company subject to its General Conditions of Service printed overleaf, available on request or accessible at www.sgs.com/terms_and_conditions.htm and, for electronic format documents, subject to Terms and Conditions for Electronic Documents at www.sgs.com/terms_e-document.htm. Attention is drawn to the limitation of liability, indemnification and jurisdiction issues defined therein. Any holder of this document is advised that information contained hereon reflects the Company's findings at the time of its intervention only and within the limits of Client's instructions, if any. The Company's sole responsibility is to its Client and this document does not exonerate parties to a transaction from exercising all their rights and obligations under the transaction documents. This document cannot be reproduced except in full, without prior written approval of the Company. Any unauthorized alteration, forgery or falsification of the content or appearance of this document is unlawful and offenders may be prosecuted to the fullest extent of the law.

" Unless otherwise stated the results shown in this test report refer only to the sample(s) tested and such sample(s) are retained for 15 days only.

Process Flow for analysis of Flame Retardants in plastics, metals and electronic components sample



Analyzed By : Sachin Vibhute

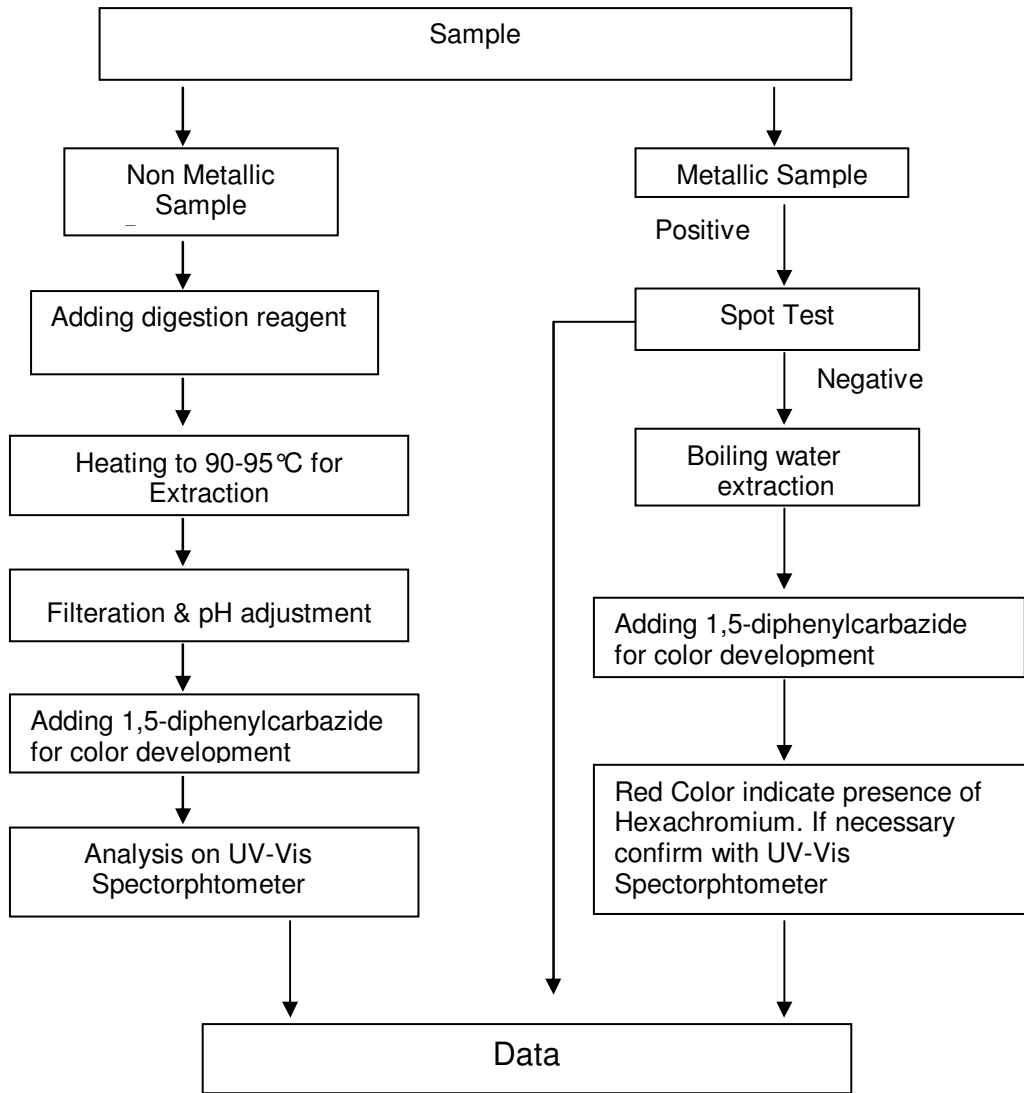
Checked By : Amit Kulkarni

This is a computer generated report does not require signature

This document is issued by the Company subject to its General Conditions of Service printed overleaf, available on request or accessible at www.sgs.com/terms_and_conditions.htm and, for electronic format documents, subject to Terms and Conditions for Electronic Documents at www.sgs.com/terms_e-document.htm. Attention is drawn to the limitation of liability, indemnification and jurisdiction issues defined therein. Any holder of this document is advised that information contained hereon reflects the Company's findings at the time of its intervention only and within the limits of Client's instructions, if any. The Company's sole responsibility is to its Client and this document does not exonerate parties to a transaction from exercising all their rights and obligations under the transaction documents. This document cannot be reproduced except in full, without prior written approval of the Company. Any unauthorized alteration, forgery or falsification of the content or appearance of this document is unlawful and offenders may be prosecuted to the fullest extent of the law.

" Unless otherwise stated the results shown in this test report refer only to the sample(s) tested and such sample(s) are retained for 15 days only.

Process Flow for analysis of Hexachromium contents in plastics, metals and electronic components sample



Analyzed By: Sachin Vibhute

Checked By: Amit Kulkarni

This is a computer generated report does not require signature

This document is issued by the Company subject to its General Conditions of Service printed overleaf, available on request or accessible at www.sgs.com/terms_and_conditions.htm and, for electronic format documents, subject to Terms and Conditions for Electronic Documents at www.sgs.com/terms_e-document.htm. Attention is drawn to the limitation of liability, indemnification and jurisdiction issues defined therein. Any holder of this document is advised that information contained hereon reflects the Company's findings at the time of its intervention only and within the limits of Client's instructions, if any. The Company's sole responsibility is to its Client and this document does not exonerate parties to a transaction from exercising all their rights and obligations under the transaction documents. This document cannot be reproduced except in full, without prior written approval of the Company. Any unauthorized alteration, forgery or falsification of the content or appearance of this document is unlawful and offenders may be prosecuted to the fullest extent of the law.

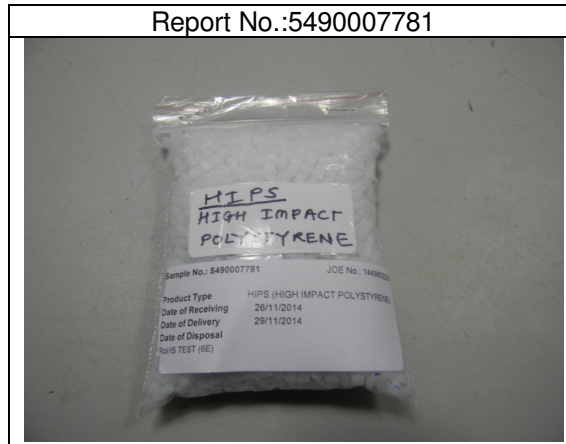
" Unless otherwise stated the results shown in this test report refer only to the sample(s) tested and such sample(s) are retained for 15 days only.

TEST REPORT

Report No. : PN:HL:5490007781

DATE : 28/11/2014

Sample Photo: as received



SGS authenticate the photo on original report only

*** End of Report ***

Per Pro SGS India Private Ltd

Authorized Signatory

Email your Test Report Related Enquiries at Feedback.HLT@sgs.com

This is a computer generated report does not require signature

This document is issued by the Company subject to its General Conditions of Service printed overleaf, available on request or accessible at www.sgs.com/terms_and_conditions.htm and, for electronic format documents, subject to Terms and Conditions for Electronic Documents at www.sgs.com/terms_e-document.htm. Attention is drawn to the limitation of liability, indemnification and jurisdiction issues defined therein. Any holder of this document is advised that information contained hereon reflects the Company's findings at the time of its intervention only and within the limits of Client's instructions, if any. The Company's sole responsibility is to its Client and this document does not exonerate parties to a transaction from exercising all their rights and obligations under the transaction documents. This document cannot be reproduced except in full, without prior written approval of the Company. Any unauthorized alteration, forgery or falsification of the content or appearance of this document is unlawful and offenders may be prosecuted to the fullest extent of the law.

" Unless otherwise stated the results shown in this test report refer only to the sample(s) tested and such sample(s) are retained for 15 days only.